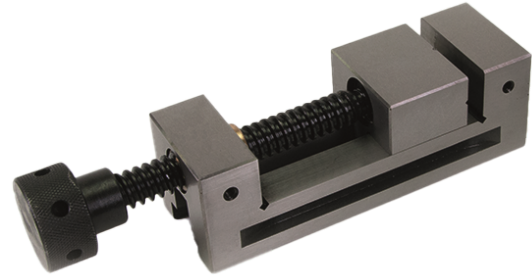


# Data sheet

## Precision vice

### DESCRIPTION

Made from high-quality hardened steel, 58-62 HRC.  
Parallelism accuracy: +/- 5 microns. Available in three sizes.  
Optimal when combined with a magnetic ball.



\*photo shows the 37-PSS01 vice

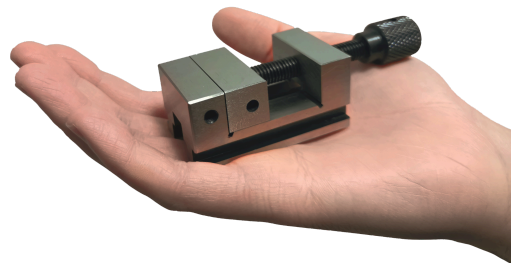
### TECHNICAL DATA

Dimensions:

**37-PSS01** - 155 mm x 50 x 25 mm, weight: 2.8 kg  
max jaw opening: 65 mm

**37-PSS02** - 220 mm x 80 x 40 mm, weight: 7 kg  
max jaw opening: 100 mm

**37-PSS03** - 58 mm x 33 x 15 mm, weight: 0.4 kg  
max jaw opening: 20 mm



\*photo shows the 37-PSS03 vice

### OPTIONAL ADDITIONAL COMPONENTS (Not included in the set)

-

### APPLICATION

Laser welding and engraving.

### SPARE PARTS

-

### PACKAGE CONTENTS

Precision vice, hook wrench.

### ADDITIONAL INFORMATION

37-PSS01 - Tariff code 8205 70 00 00; Country of Origin: CN

37-PSS02 - Tariff code 8205 70 00 00; Country of Origin: CN

37-PSS03 - Tariff code 8205 70 00 00; Country of Origin: CN

### WARRANTY CONDITIONS

12 months from the date of purchase.

Data sheet

# Precision vice

---

