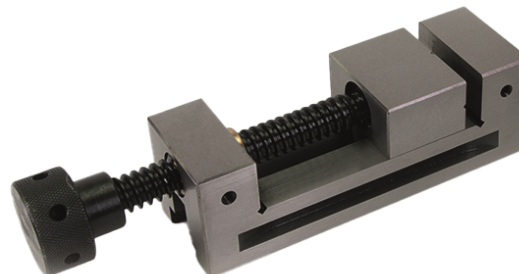


## DESCRIPTION

Made from high-quality hardened steel, 58-62 HRC.  
Parallelism accuracy: +/- 5 microns. Available in three sizes.  
Optimal when combined with a magnetic ball.



## TECHNICAL DATA

Dimensions:

**37-PSS01** - 155 mm x 50 x 25 mm, weight: 2.8 kg  
max jaw opening: 65 mm

**37-PSS02** - 220 mm x 80 x 40 mm, weight: 7 kg  
max jaw opening: 100 mm

**37-PSS03** - 58 mm x 33 x 15 mm, weight: 0.4 kg  
max jaw opening: 20 mm

\*photo shows the 37-PSS01 vice

## OPTIONAL ADDITIONAL COMPONENTS (Not included in the set)

-

## APPLICATION

Laser welding and engraving.

## SPARE PARTS

-

## PACKAGE CONTENTS

Precision vice, hook wrench.

## ADDITIONAL INFORMATION

37-PSS01 - Tariff code 8205 70 00 00; Country of Origin: CN

37-PSS02 - Tariff code 8205 70 00 00; Country of Origin: CN

37-PSS03 - Tariff code 8205 70 00 00; Country of Origin: CN

## WARRANTY CONDITIONS

12 months from the date of purchase.